



# AIA

## Eastern Illinois Chapter



A Chapter of The American Institute of Architects

### PCS PHOSPHATE / POTASH CORP.

Office & Conference Center

Category: Sustainable

Building Type: New

Project Location: Marseilles, Illinois

Client: PCS Phosphate/Potash Corp

Building Area: 7,400 Square Feet

Cost of Construction: \$3.1 Million

Date of Completion: April 2009

Architect: Basalay, Cary and Alstadi, Architect, Ltd.



#### Project Description:

New facility located on an existing industrial campus. The program for this facility stated six goals:

- Create a facility that satisfies the functional requirements of a conference/training facility and is adaptable as a backup executive administration office.
- Create a facility of quality comparable to the company's U.S. Corporate Headquarters offices located in Northbrook, Illinois, yet also which fits into the industrial environment of the Marseilles plant.
- Create a concept of building and site design that provides for the future replacement of the existing office building with a new structure whose design and placement will appear to be an extension of the first.
- Improve and strengthen aesthetics and the sense of arrival to the existing industrial site.
- As a part of the corporation's security and safety plan, meet the needs of a Safe Haven facility.
- Achieve LEED Certification at minimum and Silver Certification or better as ideal.

The building site is located adjacent to the existing administration building of the entry to the site. Site improvements included removal of many overhead utility lines, replacement of chain link security fence with wrought iron fence, and replacement of a metal guard shack with a new building consistent with the new main office. Parking for conference attendees is substantially reduced by being to and from nearby hotels.

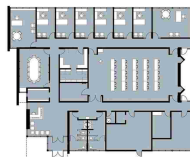
The architectural design of the building was created to improve the aesthetic of the site while maintaining an industrial character. The building functions as offices for plant administration and conferencing for up to 60 persons. Conferencing is for sales and staff training. The facility provides fully automated A/V and computer technology for conferencing. A catering kitchen provides for meals.

The facility achieved a LEED Gold Certification, with 43 points of 69 total available under LEED NC2.2. Among the many features leading to the Gold rating are: controlled day lighting in occupied spaces; a sophisticated air-to-air heat pump HVAC system with heat recovery and individual room temperature and air quality controls; use of 10% recycled materials; 20% regionally manufactured materials; and collection of rainwater.

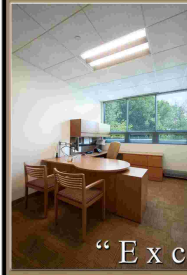
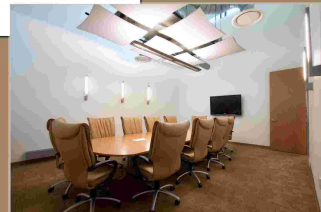
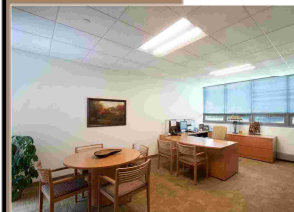


#### Jury Comments:

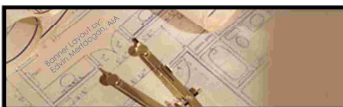
"It is a contemporary design using natural materials. The design allows for natural light into spaces using lofty open spaces with clerestory windows bringing day lighting into the interior space."



"The final design of this building met all of the program parameters set out by the client. The use of day lighting, material selection and scale of facade elements created a balanced and welcoming environment for office staff as well as visiting trainees."



"Excellence In Design"



2010 DISTINGUISHED BUILDING AWARDS