



AIA

Eastern Illinois Chapter



A Chapter of The American Institute of Architects

CALVARY CHURCH

Citation Award

Building Type: New

Project Location: Orland Park, Illinois

Client: Calvary Church of Orland Park

Building Area: 46,000 square feet

Cost of Construction: \$ 8.0 Million

Date of Completion: April 2011

Architect: LINDENGROUP Architects

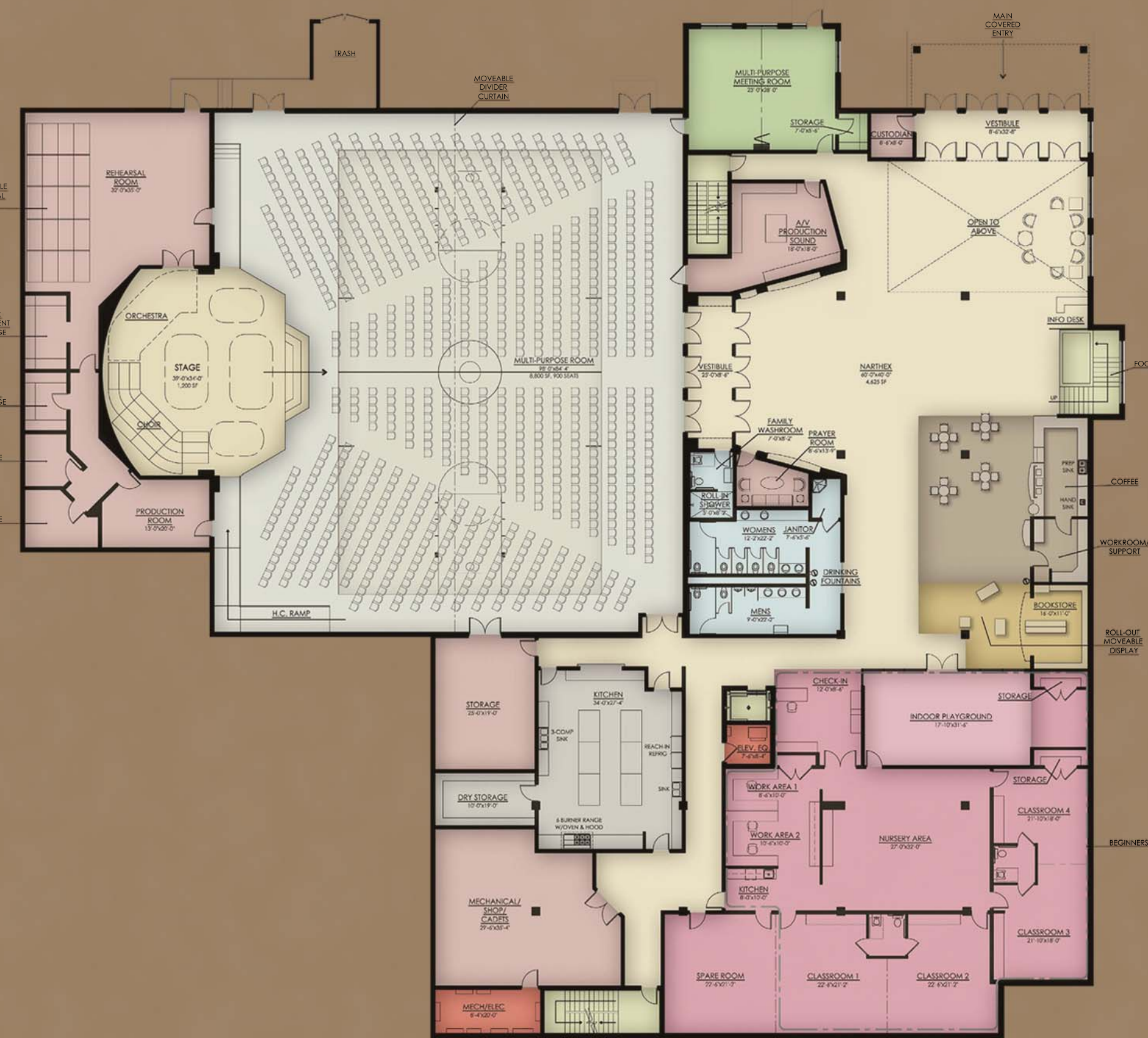


Project Description:

The design for this facility included Land Planning for 31 acres and Architectural Design for a new +/- 46,000 SF facility for Calvary Church. The master plan features a new mixed use building for: offices, worship space, classrooms, multipurpose room, indoor & outdoor reflection spaces, landscape, bioswales, detention ponds, and parking areas. Architectural services included: Construction Management, zoning/entitlement, preliminary design, design development, construction documents, interiors, and construction administration.

Several environmental considerations were taken into account for this project. Regional materials and precast concrete were utilized for the building envelope to reduce construction time & cost. Bioswales between parking aisles filter run off and decrease diverted off site storm water. Natural vegetation was incorporated in the detention pond edge for filtration. PerVIOUS paving at the drop off circle decreases diverted off site storm water. Drought tolerant native plantings to minimize the need for potable water irrigation. Low flow fixtures and censored fixtures to minimize use of potable water. White reflective Energy Star Roof membrane utilized to minimize Heat Island Effect.

A local artist was commissioned to paint wall murals and craft faux finishes in the children's indoor playground, nursery, and classroom areas. Simple architecture was transformed into fun and friendly spaces that promote creativity, learning, and overall development.



FIRST FLOOR PLAN



SECOND FLOOR PLAN

Jury Comments:

"The design is well thought out and elegantly meets all the programmatic needs. The architect's massing, proportioning and division of spaces within such a large structure was successful in providing a human scale at both the exterior and interior."



“Excellence In Design”



2014 DISTINGUISHED BUILDING AWARDS