



# AIA

## Eastern Illinois Chapter



A Chapter of The American Institute of Architects

# REAVIS HIGH SCHOOL

Special Recognition Award

Building Type: Renovation

Project Location: Burbank, Illinois

Client: Reavis High School District #220

Building Area: 21,463 square feet

Cost of Construction: \$4,849,175.00

Date of Completion: December 2013

Architect: SPM Architects, Inc.



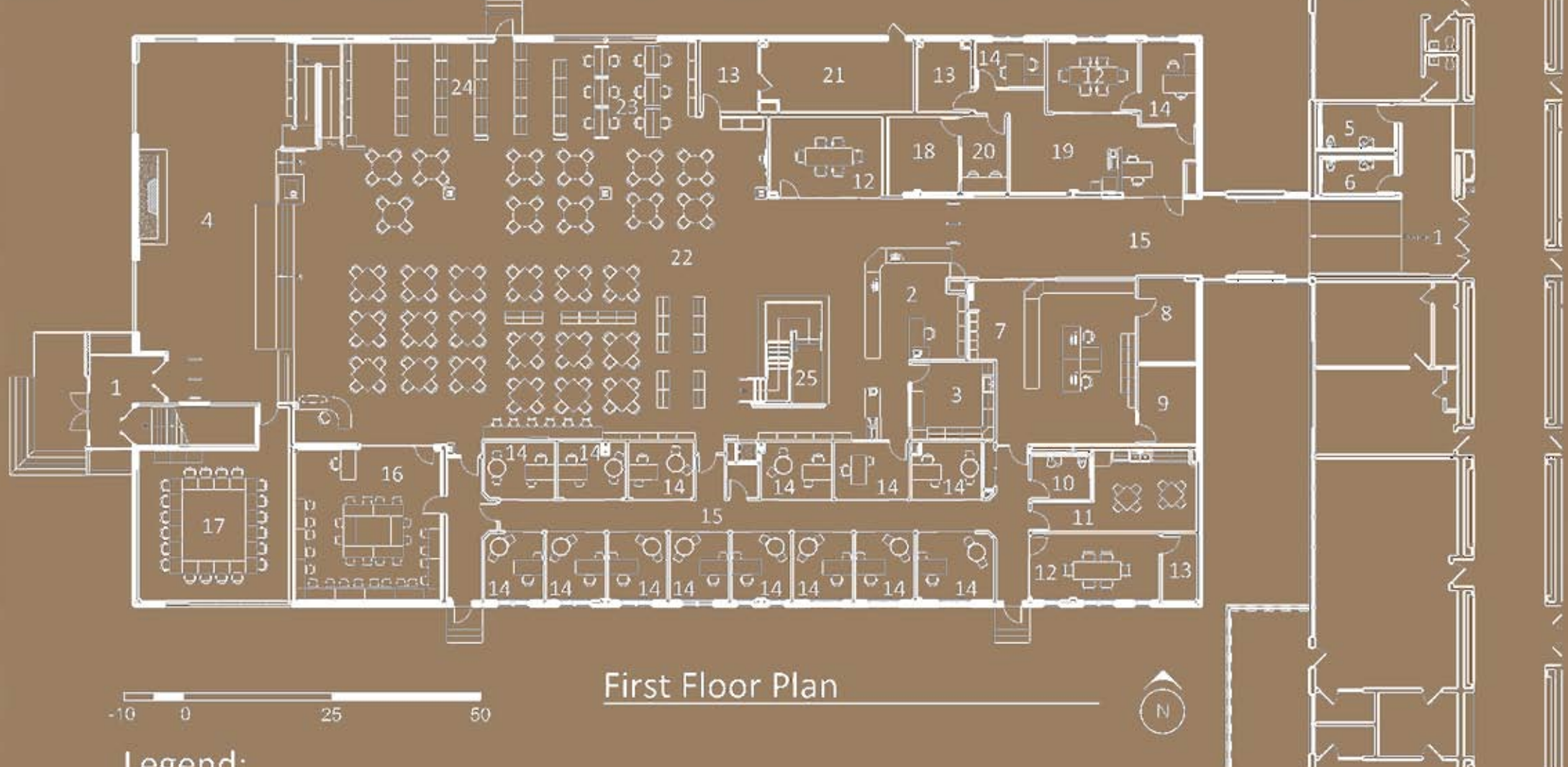
www.spmarchitects.com

### Project Description:

The Library had become a student hub; a focal point for the student body to gather, collaborate, research, study, socialize, and perform. The design required the space to be multi-functional, open, and versatile all while maintaining a functional 21,000 volume library. For years, the administration wished to relocate the Guidance Department from its remote location into this student center.

The Guidance Department, located directly above the Library, was brought down and incorporated into the department with moveable glass partitions securing it in the evenings. In the 2nd Floor vacated space, the construction was opened between floors and a custom circulation stair was introduced. This allowed for a quieter, intimate extension of the Library. This space, with an area for a SMART board classroom instruction, can be enclosed with a series of moveable glass partitions.

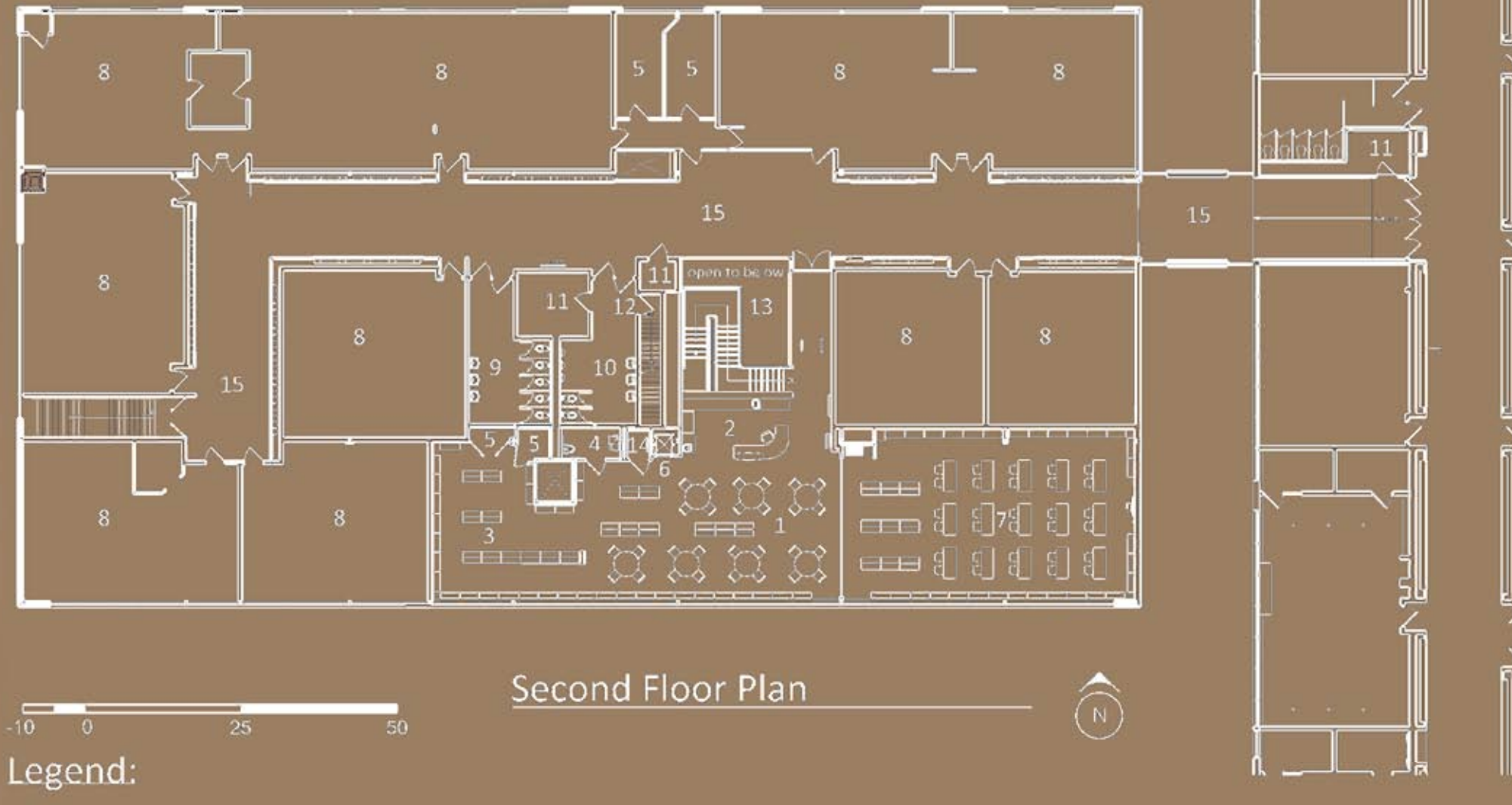
On the main Library floor, the book stacks were condensed. Moveable stacks were introduced within the seating area to accommodate the multi-functional use of the space. Media tables with interconnectivity to a central monitor were incorporated to facilitate collaborative learning. Adjacent to these is a SMART board installation to create small pods of areas to be used for adjunct classroom instruction. Audio sound systems with hidden short throw projectors and retractable screens connected to a single source LCD control panel were introduced for larger media presentations. One of the focal and gathering points of the Library was maintained by replacing the original fireplace. In keeping with the original design of stone at the fireplace and planter boxes, Cultured Stone was used at the fireplace and the bases at the existing columns. Certainfeud Fiber Cement trim boards were used to create the wrap around the columns and to define the Library areas. The entire mechanical system was replaced for this wing.



First Floor Plan

#### Legend:

- 1. Vestibule
- 2. Circulation
- 3. Work Room
- 4. Mezzanine
- 5. Women's Restroom
- 6. Men's Restroom
- 7. Guidance Dept.
- 8. Archive Room
- 9. Photo Room
- 10. Restroom
- 11. Break Room
- 12. Conference Room
- 13. Storage
- 14. Office
- 15. Corridor
- 16. Career Center
- 17. Board Room
- 18. Radio Room
- 19. A/V Dept
- 20. Editing Room
- 21. Electrical Switchgear
- 22. Main Library
- 23. Media Tables
- 24. Book Stacks
- 25. Circulation Stair



Second Floor Plan

#### Legend:

- 1. Library
- 2. Circulation
- 3. Book Stacks
- 4. Restroom
- 5. Storage
- 6. Book Lift
- 7. Meeting Room
- 8. Classroom
- 9. Girls Restroom
- 10. Boy's Restroom
- 11. Custodial
- 12. Penthouse Stair
- 13. Circulation Stair
- 14. Electrical Room
- 15. Corridor



### Jury Comments:

"Successful use of energy with efficient HVAC and electrical systems; a well thought out and implemented design; the plan functions well and addresses the flexibility necessitated by the ever-changing needs of today's library."



## "Excellence In Design"



## 2014 DISTINGUISHED BUILDING AWARDS